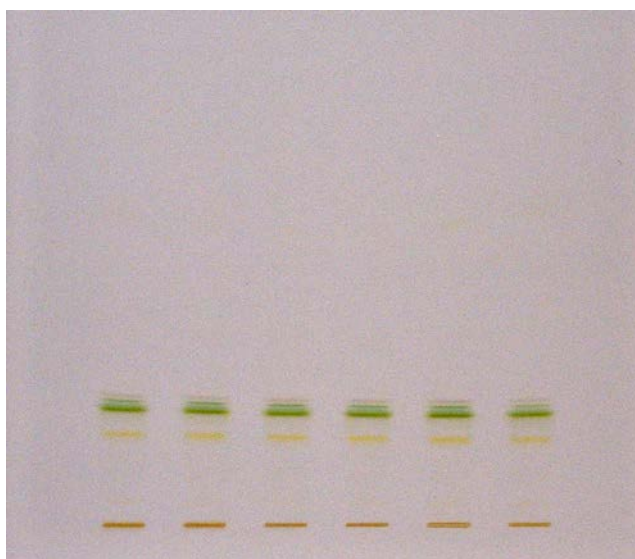


# Separation of plant pigments on Silica gel 60

Plate	HPTLC Silica gel 60 F254, 10x10cm (P/N 1. 05628, alt P/N 1. 05642)
Mobile phase (v/v)	n-heptane/1-propanol (9/1)
Migration distance	5 cm
Application volume	5 µL
Sample preparation	Milling leafs in a mortar with acetone
Chamber	Normal chamber without chamber saturation
Detection	Detection white light



## Chromatographic data

No.	Compounds	Solvent
1 to 6	leafs	acetone
	carotenes	
	pheophytin	
	chlorophyll a	
	chlorophyll b	
	lutein	
	violaxanthin	
	neoxanthin	